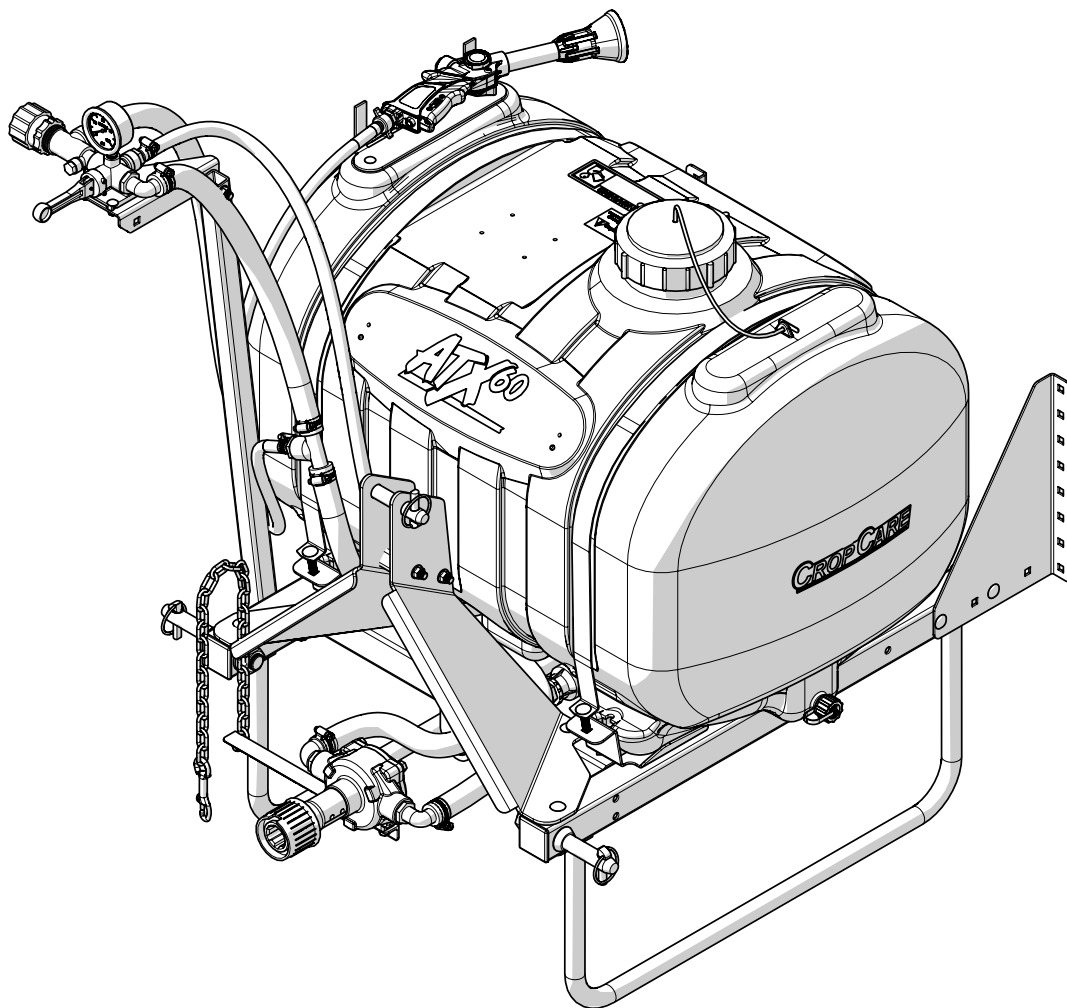




# Owner's Manual

ATX 60 Sprayer  
Model ATX60-3PT-P



Manufactured by PBZ LLC  
A Paul B Zimmerman Inc. Company  
[www.CropCareEquipment.com](http://www.CropCareEquipment.com)

Form ATX60-3PT-POM  
Rev. A.2 Date: 05/21

# Table Of Contents

Identification of Machine .....	2	Breakdowns & Parts Lists .....	11
Before You Begin.....	2	ATX60-3PT-P Breakdown .....	11
Safety Precautions.....	3	ATX60-3PT-P Parts List .....	12
General Guidelines.....	3	ATX60-3PT-P Parts List Continued .....	13
Before Operation .....	4	T740 Breakdown & Parts List .....	14
During Operation .....	4	Roller Pump Breakdown & Parts List .....	15
Pump Safety Precautions.....	4	Spray Gun Breakdown .....	16
Following Operation .....	4	Spray Gun Breakdown Continued.....	17
Mounting Instructons.....	5	23120 Relief Valve Breakdown & Parts List.....	18
Mounting The Pump .....	5	Strainer Breakdown & Parts List .....	18
Calibrating The Sprayer .....	5	Manual Control Valve Breakdown & Parts List .....	19
Determining The Speed.....	6	PTO Coupler Breakdown & Parts List .....	19
Calculating the GPM and using Calibration chart .....	6	CropCare® Limited Warranty .....	20
Adjusting The Sprayer Pressure .....	6	Ordering Parts .....	20
Calibration Chart.....	7		
Operation Instructions .....	8		
Spraying With The Boom .....	8		
Spraying With The Spray Gun.....	9		
Maintenance Instructions .....	9		
Routine Maintenance.....	9		
Pump Maintenance .....	10		
Winterizing Your Sprayer .....	10		

## Identification of Machine

- Model #'s: ATX-3PT-P
- The model number and revision identification decal is located on top of the tank .

## Before You Begin



Please read and understand this manual and its instructions and warnings completely before operating the sprayer.

- Be aware of all safety guidelines, warnings, and cautions including those of the tractor manufacturer.
- Read and understand the chemical manufacturer's labels, warnings, and instructions.
- Know and fulfill all state pesticide applicator license requirements.
- Familiarize yourself and other operators with the sprayer's components and how all parts are operated.

# Safety Precautions



## General Guidelines

Every year many unnecessary accidents occur due to improper equipment handling and a disregard for safety precautions. You, the operator, can avoid accidents by observing the precautions in this section.

- The operator should be a responsible adult. Do not allow persons to operate this sprayer until they have displayed a thorough understanding of sprayer safety precautions and operational use!
- All operators must also fulfill state pesticide applicator license requirements!
- Never attempt to operate this sprayer when under the influence of alcohol or drugs.
- The best defense against accidents is a careful and responsible operator.
- A chemical warning decal and an owner's manual warning decal are located on the sprayer's tank. (See Figure 1 and 2). Be aware of their location. Always replace any warning decals that are not legible or are missing.
- If your sprayer is equipped with a PTO drive shaft, it is very important to take the proper safety precautions.
- Failure to keep body parts or clothing clear of the sprayer's PTO drive shaft could result in serious injury or death. CropCare® assumes no liability for any possible injury.
- Be aware of the PTO warning decal on the PTO drive shaft (Figure 3).
- Never step over, or work near the PTO drive shaft during operation.
- When transporting the sprayer on public roads, always follow state and local regulations regarding safety and transportation requirements. Use the necessary lights and slow moving vehicle (SMV) emblems.
- If there is any portion of this manual that you do not fully understand, please contact the original retailer.

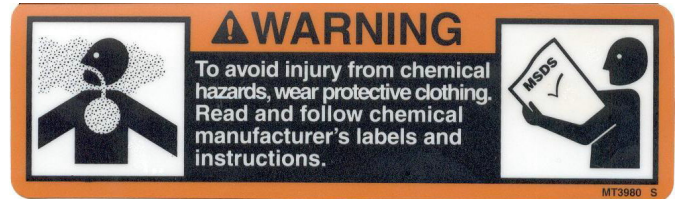


Figure 1: Chemical Warning Decal (DEMT3980)



Figure 2: Owner's Manual Decal (DE39)



Figure 3: PTO warning decal

# Safety Precautions



## Before Operation

- Carefully study and understand this owner's manual.
- Read and follow chemical manufacturer's labels, warnings, and instructions! A material safety data sheet (MSDS) should be provided by the chemical manufacturer.
- To avoid injury from chemical hazards, wear the proper protective clothing. Each chemical manufacturer's clothing requirements are listed under the "Personal Protective Equipment (PPE)" section in the chemical instructions.
- Never exceed your tractor's load rating.
- Do not wear loose-fitting clothing which may catch in moving parts.
- Give the sprayer a visual inspection for any worn parts, loose bolts, or other visible problems, and make any needed repairs. See the maintenance section (page 10).
- Make sure the area is clear of any people or obstructions before using the sprayer.
- Before adding chemicals, have all operators practice operating the sprayer (clean water only) and its attachments until all operators are completely capable of safe operation.



## During Operation

- Always be aware of bystanders, particularly children! Always look before moving the sprayer or engaging the PTO.
- Never leave running equipment unattended!
- Keep hands and body parts clear of all moving parts, especially the tractor PTO.
- Be aware of dangerous terrain such as holes, slopes, drop-offs, banks, rocks, and hidden hazards. Operate the tractor and sprayer up and down slopes, not across.
- When operating on inclines, it is especially important that your tractor is equipped with Roll Over Protection System (ROPS).
- No passengers are allowed on or in the tractor or sprayer at anytime.
- Allow for sprayer boom length when making turns.
- Remember that accidents can even happen to seasoned operators. Always take your time and follow all safety instructions.



## Pump Safety Precautions

1. Never pump flammable or explosive fluids such as gasoline, fuel oil, kerosene, etc.
2. Never pump acids (i.e. acid fertilizer) with super rollers. For acid fertilizer Hypro recommends the Silver Series castings with Teflon rollers.
3. Never run the pump dry! Never pump faster than, or above, the maximum recommended speed and pressure.
4. Never pump liquids at temperatures higher than the recommended maximum temperature (140° F / 60° C) Do not exceed this temperature.
5. Before servicing your pump, disconnect the power, release all pressure, and drain all liquids.

# Safety Precautions



## Following Operation

- Following operation, it is very important that you completely rinse the entire sprayer and all of its components of all chemical residue.
- Following operation, stop the tractor unit, set the brakes, disengage PTO shaft, shut off the engine, and remove the ignition key.
- Park the sprayer on a hard level surface.
- Store the sprayer away from human and livestock activity.
- Do not permit children to play on or around sprayer.

# Mounting Instructions

## Mounting the 3pt Sprayer

1. Attach the sprayer to the tractor using the two lift arm pins (a) and the top link pin (b) (Figure 8).
2. For optimal performance, be sure to adjust the tractor's three point hitch so that the tank is level at the correct spraying height.
3. Warning: Do not exceed the manufacturer's lift capacity for the tractor.

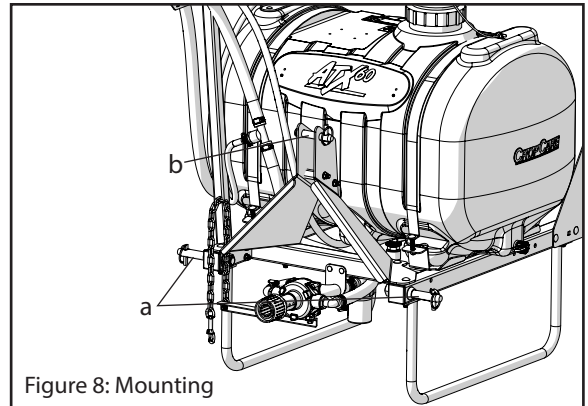


Figure 8: Mounting

## Mounting The Pump

It is important to correctly mount the pump to insure safe operations. The preferred method for mounting the torque arm and the pump to the tractor is with the torque arm chain attached to a point on the tractor above the torque arm for support.

1. Mount the pump and torque arm to the PTO shaft using the PTO coupler (included with the pump). When connecting the PTO coupler to the PTO shaft make sure it is locked securely in the groove on the PTO shaft.
2. Attach the torque chain to the tractor frame with the torque arm in a horizontal position. The chain should be attached to the tractor as close to vertical as possible to avoid a bending force on the pump (Figure 4).

NOTE: Some tractors do not have easy attachment points for attaching the torque chain. It may be necessary to drill holes in the tractor's master shield to attach the chains. It is also acceptable to mount an angle iron on the master shield to attach the chain.

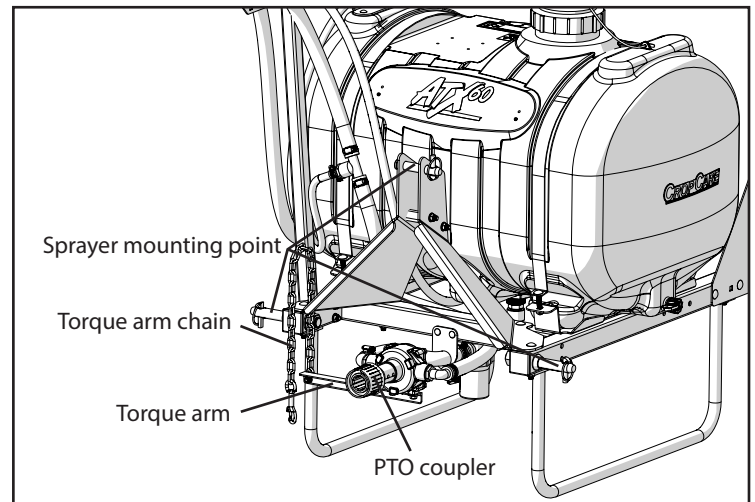


Figure 4: Sprayer and pump mounting

## Calibrating The Sprayer

Note: All calibration needs to be done with water!

When spraying with the boom, the sprayer must be calibrated to ensure proper spray coverage and to combat over-application or under-application. The calibration process is simplified when broken up into the following three steps:

1. Calculate the speed of the tractor.
2. Determine size of the nozzle and then consult the calibration chart for the desired or instructed Gallon per Acre (gpa).
3. Set the pressure accordingly using the relief valve.

# Calibrating The Sprayer

## 1. Determining the Speed

It is important to determine the speed your tractor will be traveling at while spraying. While some tractors have speedometers, it is still recommended that the speed be calculated for all tractors. To determine the speed use the four following steps:

1. Measure a 200 foot or 300 foot distance on a field or a surface similar to where you will be spraying.
2. Drive the tractor and sprayer (tank half-full is optimal) across the measured distance using a gear that provides a comfortable spraying speed while operating the tractor engine at a sufficient level to provide 540RPM PTO speed.
3. Record the amount of time (in seconds) required to travel the measured distance.
4. Your speed can be found by entering your data into the equation below or by consulting the table to the right.

$$\text{Speed (mph)} = (\text{Distance (ft)} \times 60) / (\text{Time (seconds)} \times 88)$$

NOTE: When calculating tractor speed be sure to select a gear that allows the tractor to operate between 75%-100% of the tractor's RPM range. This will allow the pump to operate at full volume. Selecting a higher gear will not allow the pump to work efficiently.

Speed in MPH	Time required (seconds) to travel a distance of:	
	200 feet	300 feet
1.0	136	205
1.5	91	136
2.0	68	102
2.5	55	82
3.0	45	68
3.5	39	58
4.0	34	51
4.5	30	45
5.0	27	41
5.5	25	37
6.0	23	34
6.5	21	31
7.0	19	29

NOTE: It is helpful for future references to record the exact RPM and gear used to find your speed.

## 2. Calculating the GPM and using Calibration Chart

The spray nozzles on your sprayer are color-coded and match up with the calibration chart. After the nozzle size has been determined, you need to look at the calibration chart. Using the tractor speed, nozzle size, and desired gallons per acre (GPA), find the pressure (psi) necessary to achieve the desired GPA. It is important to note that lower pressure settings will result in less spray drift.

Example: Assume you have found your tractor speed to be 5 MPH, your nozzles are blue (XRC11003), and you want to spray 15 GPA. Upon looking at the chart, you will find that you should set the sprayer's pressure at about 28 psi in order to apply 15 GPA.

NOTE: Due to normal wear, Teejet® recommends that you replace your sprayer nozzles after every spraying season. Nozzle replacement will ensure accurate spraying performance.

# Calibrating the Sprayer

## Calibration Chart

There are many different sizes and styles of spray tips available through the original retailer. The following table may not contain the information that you need. If you need further information, please contact the original retailer for assistance.

Tip Size	PSI	GPM of One Nozzle	Speed Range 4-8 Gallons per Acre (GPA)			
			4 MPH	5 MPH	6 MPH	8 MPH
02 (Yellow)	15	.12	8.9	7.1	5.9	4.5
	20	.14	10.4	8.3	6.9	5.2
	30	.17	12.6	10.1	8.4	6.3
	40	.20	14.9	11.9	9.9	7.4
	50	.22	16.3	13.1	10.9	8.2
	60	.24	17.8	14.3	11.9	8.9
	75	.27	20	16.0	13.4	10.0
	90	.30	22	17.8	14.9	11.1
025 (Lavender)	15	.15	11.1	8.9	7.4	5.6
	20	.18	13.4	10.7	8.9	6.7
	30	.22	16.3	13.1	10.9	8.2
	40	.25	18.6	14.9	12.4	9.3
	50	.28	21.0	16.6	13.9	10.4
	60	.31	23.0	18.4	15.3	11.5
	75	.34	25	20	16.8	12.6
	90	.38	28	23	18.8	14.1
03 (Blue)	15	.18	13.4	10.7	8.9	6.7
	20	.21	15.6	12.5	10.4	7.8
	30	.26	19.3	15.4	12.9	9.7
	40	.30	22.0	17.8	14.9	11.1
	50	.34	25.0	20.0	16.8	12.6
	60	.37	27.0	22.0	18.3	13.7
	75	.41	30	24	20	15.2
	90	.45	33	27	22	16.7
04 (Red)	15	.24	17.8	14.3	11.9	8.9
	20	.28	21.0	16.6	13.9	10.4
	30	.35	26.0	21.0	17.3	13.0
	40	.40	30.0	24.0	19.8	14.9
	50	.45	33.0	27.0	22.0	16.7
	60	.49	36.0	29.0	24.0	18.2
	75	.55	41	33	27	20.0
	90	.60	45	36	30	22.0

Tip Size	PSI	GPM of One Nozzle	Speed Range 4-8 Gallons per Acre (GPA)			
			4 MPH	5 MPH	6 MPH	8 MPH
05 (brown)	15	.31	23.0	18.4	15.3	11.5
	20	.35	26.0	21.0	17.3	13.0
	30	.43	32.0	26.0	21.0	16.0
	40	.50	37.0	30.0	25.0	18.6
	50	.56	42.0	33.0	28.0	21.0
	60	.61	45.0	36.0	30.0	23.0
	75	.68	50	40	34	25.0
	90	.75	56	45	37	28.0

NOTE: Flow rates are calculated using fresh water. Always remember to double check application rates.

# Operating Instructions

Before you begin operating your sprayer, it is important that you have thoroughly reviewed and understand all of the safety precautions in this manual. Always take your time and be alert when operating your sprayer. This will allow you to safely spray without accident or interruption. If you have questions regarding the safe operation of your sprayer please contact the original retailer.

## Spraying with the Boom (if equipped)

1. Calibrate the sprayer using the calibration instructions and chart (pages 5-7).
2. Connect the pump's PTO coupler to the PTO shaft (Figure 4, page 5).
3. Fill the tank with fresh water in order to set the pressure and test for leaks.
4. Prepare the sprayer for spraying by opening the ball valve (Figure 5) on the suction line from the tank and by closing the gray handled control valve (Figure 6). (Handle must be in the horizontal position as shown). Fully open relief valve (figure 6) by turning knob counter-clockwise, being careful not to completely remove the knob from the valve.
5. Start the tractor and engage the pump. The tractor should be running at the RPM rate determined when you calibrated your sprayer.
6. Increase the operating pressure to the amount determined when following the calibration steps on page 6. When you open the boom control valve, the pressure may need to be readjusted.
7. Visually inspect connections at fittings and hoses to ensure that there are no leaks, being careful to avoid rotating PTO driveline or other moving parts.
8. Your sprayer is now ready to be loaded with the amount of water and chemical recommended by the chemical manufacturer for your desired application area. Before filling the tank with water or chemical, be sure that the pump is disengaged and control valve is in the off position.
9. After filling the tank, engage the pump and allow an ample amount of time for the jet agitator to mix the water and chemicals. Note: See chemical instructions for necessary agitation time. You are now ready to begin spraying.
10. Upon arriving at the spraying location, unfold booms, engage pump, open the boom control valves, and make sure the pressure setting is correct. While spraying always remember to maintain a constant level of speed and RPM (rates found when calibrated).

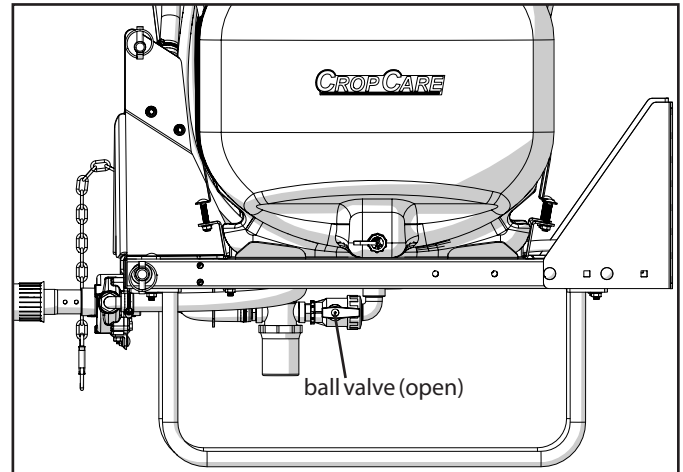


Figure 5: Suction line ball valve

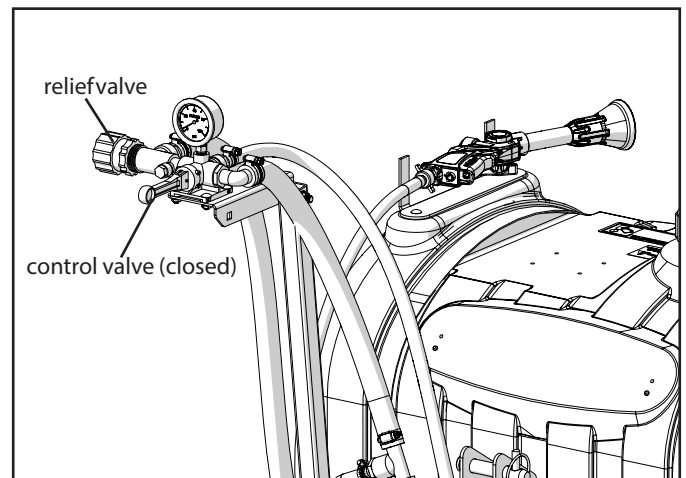


Figure 6: Boom control valve

# Operating Instructions

## Spraying with the Spray Gun

1. Connect the pump's PTO coupler to the PTO shaft (Figure 4, page 5).
2. Fill the tank with fresh water in order to set the pressure and test for leaks.
3. Prepare the sprayer for spraying by opening the ball valve (Figure 5) on the suction line from the tank and by closing the gray handled control valve (Figure 6). (Handle must be in the horizontal position as shown). Fully open relief valve (figure 6) by turning knob counter-clockwise, being careful not to completely remove the knob from the valve.
4. Start the tractor and engage the pump. The tractor should be running at the RPM rate determined when you calibrated your sprayer.
5. Increase the operating pressure to the amount determined when following the calibration steps on page 6. When you open the boom control valve, the pressure may need to be readjusted.
6. Visually inspect connections at fittings and hoses to ensure that there are no leaks, being careful to avoid rotating PTO driveline or other moving parts.
7. Your sprayer is now ready to be loaded with the amount of water and chemical recommended by the chemical manufacturer for your desired application area. Before filling the tank with water or chemical, be sure that the pump is disengaged and control valve is in the off position.
8. After filling the tank, engage the pump and allow an ample amount of time for the jet agitator to mix the water and chemicals. Note: See chemical instructions for necessary agitation time. You are now ready to begin spraying.
9. Upon arriving at the spraying location, unfold booms, engage pump, open the boom control valves, and make sure the pressure setting is correct. While spraying always remember to maintain a constant level of speed and RPM (rates found when calibrated).
10. Upon arriving at the spraying location, engage the pump, and make sure the pressure setting is correct. Adjust gun to the desired spray pattern when spraying.

# Maintenance Instructions

## Routine Maintenance

It is very important to perform routine maintenance on your sprayer before and after each use. Good maintenance practices will help to guard against sprayer breakdowns or accidents.

1. It is recommended to perform a visual and physical inspection for any worn parts, loose bolts, or other visible problems. Make all necessary repairs before spraying. Please contact the original retailer to order parts or to receive technical help.
2. After each use it is important to rinse the sprayer and all components by running fresh water through the system. Rinsing the sprayer with fresh water will greatly improve the life of the pump and other components. Failure to properly rinse the sprayer and all components after each use will void the manufacturer's warranty.

Note: All rinsate must be sprayed in field according to chemical regulations!

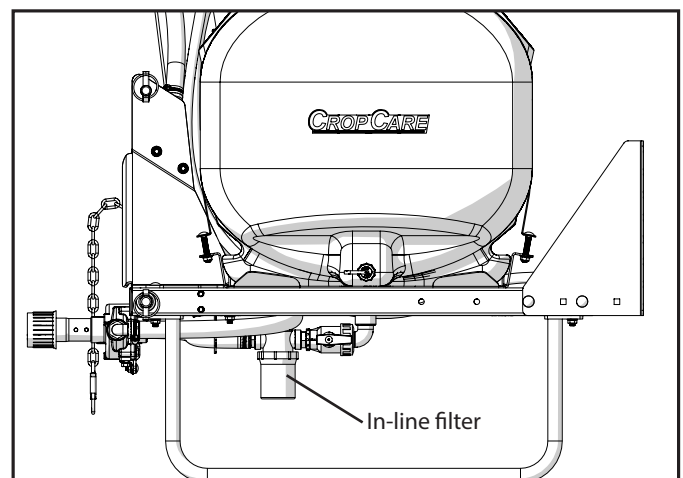


Figure 7: In-line filter

# Maintenance Instructions

## Routine Maintenance ... continued

3. The in-line filter on the suction line should be taken out and rinsed (Figure 7). Note: Be careful not to lose the gasket in the filter bowl (Figure 8). The filter will leak without this gasket.
4. Tip strainers should also be taken out and rinsed after every use. Tip strainers are small screens that are located behind each spray nozzle on the boom (Figure 9).

## Pump Maintenance

1. Follow all pump safety precautions and warnings (page 4). Following these guidelines will help to ensure many years of smooth and trouble-free service.
2. Flush the pump out with fresh water after every use. It is also very important to winterize your pump to prevent freezing and corrosion. Please see the Winterizing your Sprayer section (page 10) for winterizing instructions.

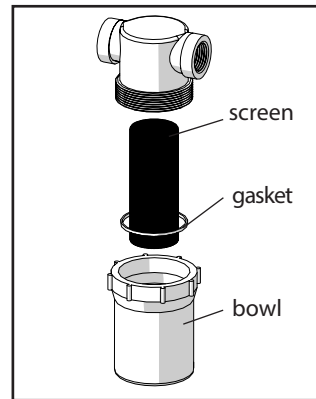


Figure 8: Filter

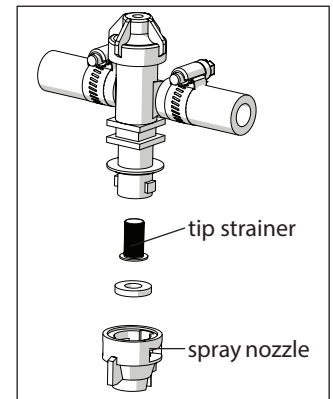


Figure 9: Nozzle breakdown

3. If your pump is leaking or has experienced a decrease in performance, you may need to change the seals and rollers. Contact the original retailer for parts and technical support.

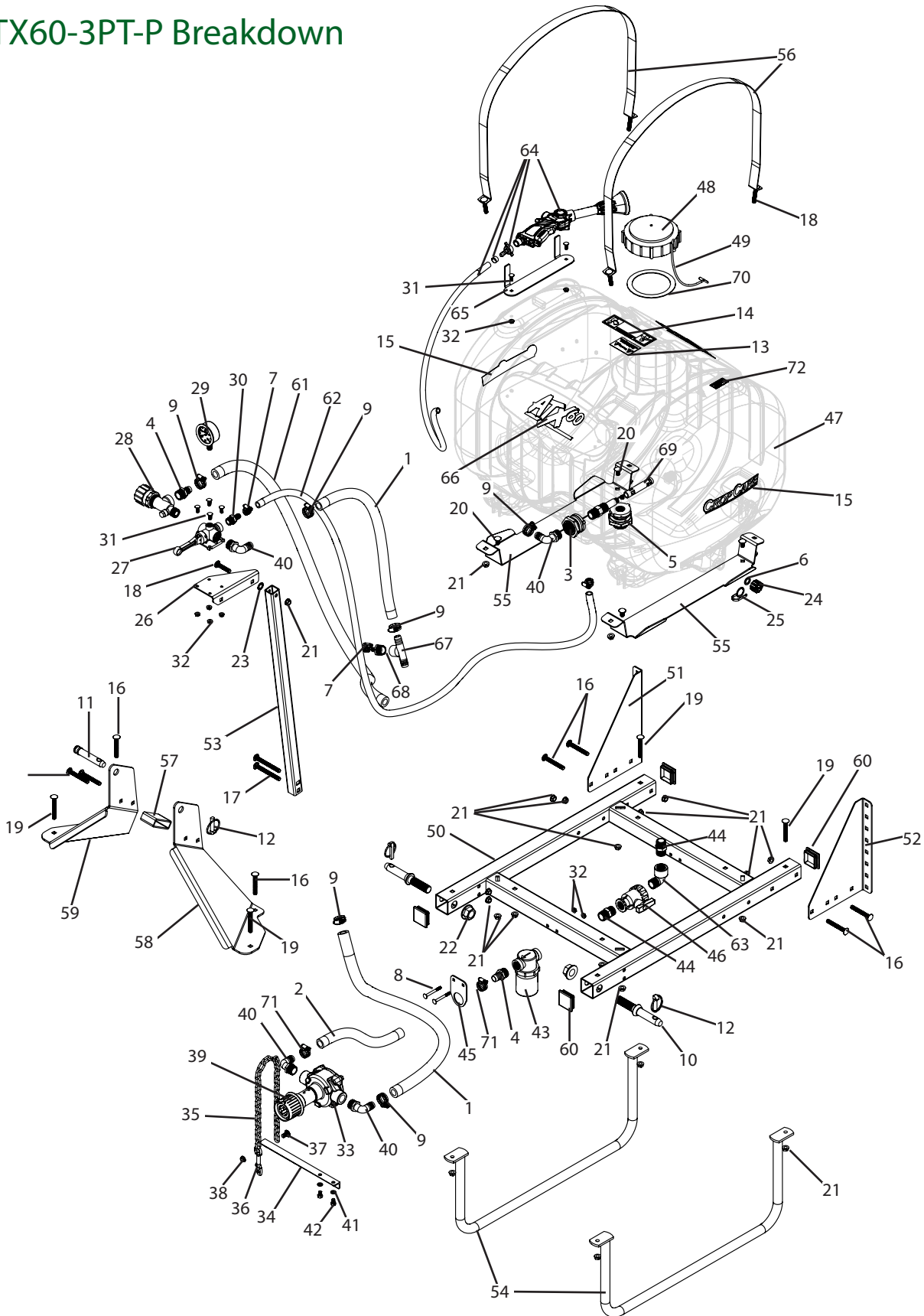
## Winterizing your Sprayer

It is essential that you winterize your sprayer to avoid damage and to allow for optimal performance. The winterization process should be undertaken before freezing conditions and/or after each season of use. Failure to winterize your sprayer will void the manufacturer's warranty.

1. Verify that the tank is empty and rinsed out. Pour 1-2 gallons of RV nontoxic antifreeze into the tank. It is not recommended to use engine antifreeze. Engine antifreeze can be harmful to humans, animals, crops, and the environment.
2. Engage the pump and spray with the boom and spray gun (if applicable). Make sure that the antifreeze has been pumped through the entire system, including all spray nozzles.
3. Store the sprayer in a safe, dry location away from the elements and human and animal activity.
4. Before spraying in the spring it is recommended to flush the sprayer with fresh water to cleanse it of the antifreeze and any other buildup. Also do a thorough inspection of all sprayer components before spraying.

# Breakdowns & Parts Lists

## ATX60-3PT-P Breakdown



# Breakdowns & Parts Lists

## ATX60-3PT-P Parts List

Ref #	Qty.	Part Number	Description
1	7'	1012	EPDM rubber hose, 3/4", 300 psi
2	4'	3003	Suction Hose, 3/4" PVC clear
3	1	60401	Tank fitting, 3/4" FPT, double tap, requires a 1 7/16" hole, includes 60402 gasket
4	2	3A3434	Hose adapter, 3/4" MPT x 3/4" barb
5	1	60401	Tank fitting, 3/4" FPT, double tap, requires a 1 7/16" hole, includes 60402 gasket
6	1	10960	* Tank Outlet Cap Gasket for Den Hartog Applicator Tank
7	2	6806052	Hose clamp, 3/8" - 7/8", stainless steel
8	2	CB14*212G5	Carriage bolt, 1/4-20 x 2 1/2", grade 5
9	6	6812052	Hose clamp, 1/2" - 1 1/4", stainless steel
10	2	03004	Lift arm pin, category 1
11	1	00073	Top link pin, category 1, 2 3/4" usable
12	3	02703	Linch pin, 7/16", category 1 & 2
13	1	DE39	Decal, "Warning Read Owner's Manual", 2" x 3"
14	1	DEMT3980	Decal, "Warning Avoid Injury Follow Labels"
15	2	DE46	Decal, CropCare logo, 1.9" x 8.8"
16	8	CB38*3G5	Carriage bolt, 3/8-16 x 3", grade 5
17	2	CB38*334	Carriage bolt, 3/8-16 x 3 3/4", grade 2
18	5	CB38*2G5	Carriage bolt, 3/8-16 x 2", grade 5
19	4	CB38*234G5	Carriage bolt, 3/8-16 x 2 3/4", grade 5
20	4	CB38*34G5	Carriage bolt, 3/8-16 x 3/4", grade 5
21	23	FN38	Flange nut, 3/8-16
22	2	FN78*14G8	Flange nut, 7/8-14 grade 8
23	1	EW12	External-tooth lock washer, 1/2"
24	1	19024	* Tank Outlet Cap for Den Hartog
25	1	19025	* Tank Outlet Cap Tether for Den Hartog Applicator Tank
26	1	CC5518	Control mount, 3PT55
27	1	AA6B	** Control valve, manual, 3/4" FPT inlets, 1/2" FPT boom connection
28	1	2312034PP	** Relief valve, 3/4" NPT, poly, 150 psi, piston-type
29	1	GG100	Gauge, 2 1/2" liquid filled, 100psi
30	1	3A1212	Hose adapter, 1/2" MPT x 1/2" barb
31	6	CB14*34G5	Carriage bolt, 1/4-20 x 3/4", grade 5
32	8	FN14	Flange nut, 1/4-20
33	1	6500N	** Roller pump, Ni-resist, 6-roller, 5/8" shaft, 3/4" FPT ports
34	1	PUMPTA	Pump torque arm
35	1	ZC316	Chain, 3/16", S-3 proof, zinc
36	1	7606011	Rigid open eye bolt snap zinc
37	1	CB516*34G5	Carriage bolt, 5/16-18 x 3/4", grade 5
38	1	FN516	Flange nut, 5/16-18
39	1	13230074	** Quick coupler, 540 RPM to 5/8" pump shaft, forged steel
40	4	3EL3434	Hose adapter, 90°, 3/4" MPT x 3/4" barb
41	2	LW516G8	Lock washer, 5/16", grade 8
42	2	H5C516*12	Hex bolt, 5/16-18 x 1/2", grade 5
43	1	33500034A	** Poly strainer, 3/4" FNPT, 50 mesh
44	2	8M34	Nipple, 3/4" MPT x short, sch 80 poly
45	1	T732	Hose bracket
46	1	075SUBV	Ball valve, union, 3/4" FPT
47	1	SB00060SY	60 gallon applicator tank, blow molded
48	1	10035	* Tank lid, 5" w/ out Lanyard
49	1	10873	* Lanyard, 12" long
50	1	T701	Main frame

# Breakdowns & Parts Lists

## ATX60-3PT-P Parts List ... continued

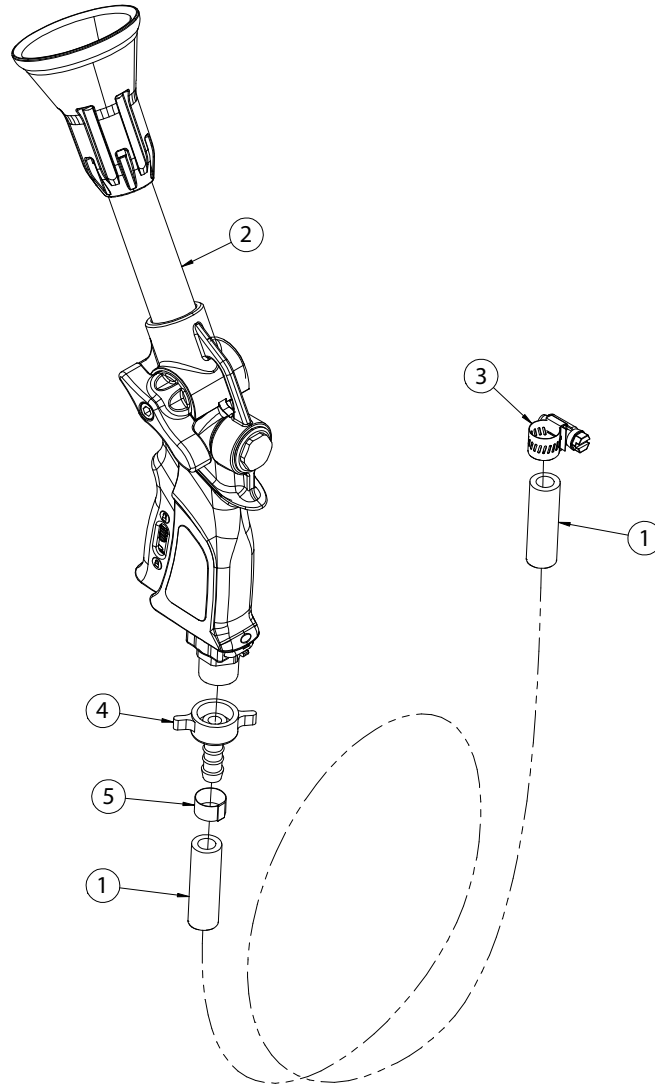
Ref #	Qty.	Part Number	Description
51	1	T702	Boom mounting angle, right
52	1	T703	Boom mounting angle, left
53	1	T714	Control mounting post
54	2	T721	3pt frame leg
55	2	T722	Tank mounting bracket
56	2	T724	Tank strap, 60 gallon DenHartog
57	1	T728	3pt arm spacer
58	1	T729	3pt arm, left
59	1	T730	3pt arm, right
60	4	CC5515	Poly cap, 2" square x 10-14 gauge, black
61	4'	1012	EPDM rubber hose, 3/4", 300 psi
62	6'	1008	EPDM rubber hose, 1/2", 300 psi
63	1	8SE34	Street elbow, 90°, 3/4" NPT, sch 80 poly
64	1	T740	Gun kit
65	1	T719	Hose holder, tank mounted, top
66	2	T707	Decal, ATX 60 gallon
67	1	3T34F	Tee, 3/4" FPT x 3/4" hose barb run, poly
68	1	3A3438	Hose adapter, 3/4" MPT x 3/8" barb
69	1	33710019	Jet agitator
70	1	11042	EPDM gasket for 5" lid
71	2	6810052	Hose Clamp, 1/2" - 1-1/16" SS
72	1	DE171	Decal, Model and Revision, ATX60-3PT-P

\* Comes with the SB00060SY

\*\* Separate breakdown listed later in manual

# Breakdowns & Parts Lists

## T740 Breakdown & Parts List



Ref #	Qty.	Part Number	Description
1	15'	1206	EPDM rubber hose, 3/8" 200 psi
2	1	5106006	* Spray gun, 700 psi
3	1	6806052	Stainless hose clamp, 3/8"-7/8"
4	1	9910110131	3/8" hose barb assembly
5	1	J201	** Band-it clamp, 3/8" x 13/16" stainless

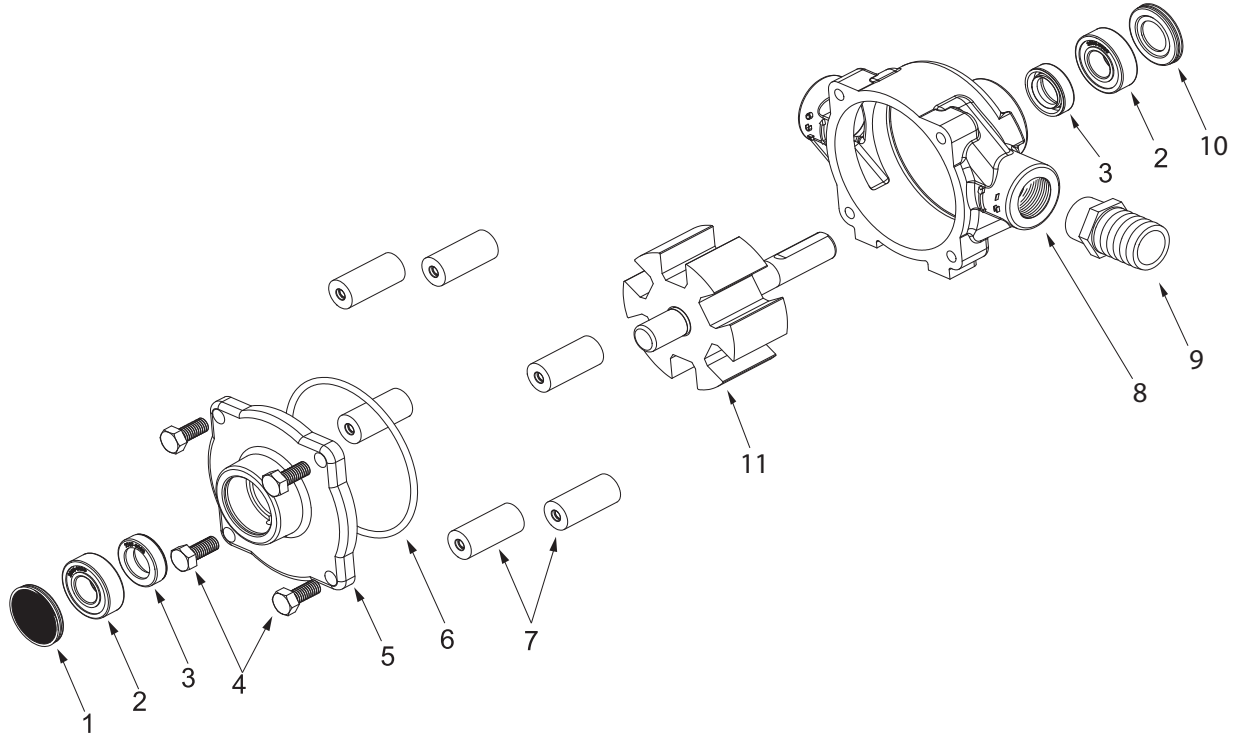
\* Spray gun breakdown is listed on page 19

\*\* Requires band installation tool. Possible alternate hose clamp part # 62606

# Breakdowns & Parts Lists

## 6 Roller Pump Breakdown & Parts List

(Hypro model 6500N)

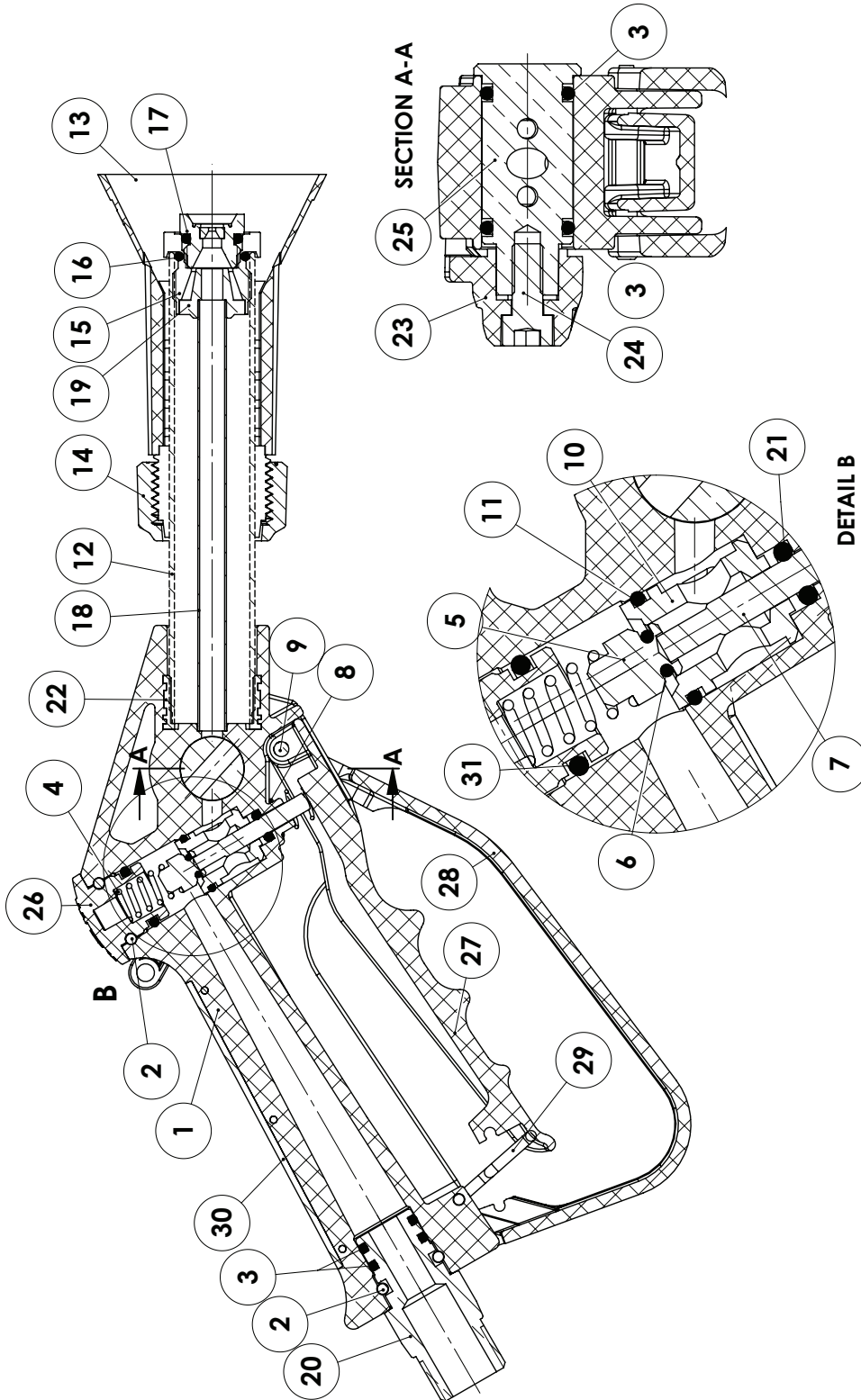


Ref #	Qty.	Part Number	Description
1	1	2300-0021	Bearing cover
2	2	2000-0010	Sealed ball bearing
3	2	2107-0002	Viton seal (standard)
3	2	2102-0001	Buna-N seal (optional)
3	2	2102-0001T	Teflon coated Buna-N seal (optional)
4	4	2210-0004	Bolts
5	1	0200-6600N	Endplate (Ni-resist) with seal
6	1	1720-0008	O-ring gasket for endplate
7	6	1005-0004	Super roller (standard)
8	1	0100-6600N	Body (Ni-resist) with seal
9	1	2404-0052	1" hose barb
10	1	2300-0023	Shaft bearing cover
11	1	0300-6600N	Rotor assembly (Ni-resist)

### Repair parts kits:

3430-0380 Consists of: 6 pc. ref. #7 (super rollers), 1 pc. ref. #6 (o-ring), and 2 pc. ref. #3 (viton seals).

## Spray Gun Breakdown



# Breakdowns & Parts Lists

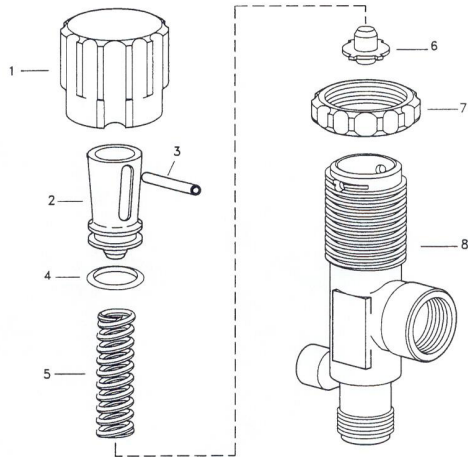
## Spray Gun Parts List

Ref#	Qty.	Part Number	Description
1	1		Spray Gun Body
2	2		Closing Clips
3	4	OR13-5X2-5V	Seal Ring 13.5 x 2.5 VITON
4	1		Piston Spring
5	1	5106012PP	Piston Head
6	1	OR4-48X1-78V	Seal-ring 4.48 x 1.78 VITON
7	1	5106012A	Piston
8	1		Lever Spring
9	1		Fixing Pin
10	1	5106012CS	Piston Cage
11	1	OR12X2V	Seal Ring 12 x 2 VITON
12	1		Pipe H132
13	1		Diffuser
14	1		Diffuser Ring Nut, 1" BSP
15	1		Fitting M22x1.5/m15x1
16	1	OR16X2-5V	Seal-ring 16 x 2.5 VITON
17	1	5601006	Nozzle Head 2 diameter
18	1		Pipe 8x0.5
19	1		Helix Fitting
20	1	5106012AT	Swivel Connection
21	1	OR4-42X2-62V	Seal-ring 4.42 x2.62 VITON
22	1		Body Insert G3/8"
23	1	5106012S	Jet Selector Lever
24	1	VM614	Screw M6x14 DIN912 8.8
25	1		Selector Kingpin
26	1		Body Cap w/ Logo
27	1	5106012L	Gun Lever
28	1		Lever Protection
29	1		Lock-Unlock Clip
30	1		Handle Insert
31	1	OR13-6X2-7V	Seal-ring 13.6x2.7 VITON

# Breakdowns & Parts Lists

23120

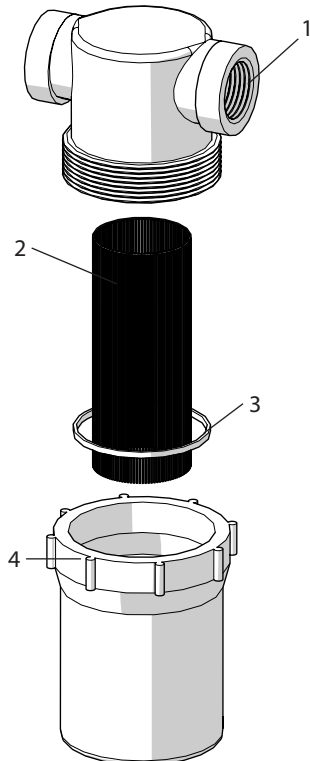
## Relief Valve Breakdown & Parts List



Ref #	Qty.	Part Number	Description
1	1	CP23122-NY	Nylon adjusting cap
2	1	N/A	Polypropylene spring retainer
3	1	*	Stainless retaining pin
4	1	*	EPDM rubber O-ring
5	1	*	Stainless spring
6	1	N/A	Polypropylene guide seat
7	1	CP23123-PP	Poly lock ring
8	1	CP23128-PP	Polypropylene body, 1/2" MNPT
*	1	PK-AB23120-KIT	Spare parts kit (includes ref # 3,4,5)

33500034A

## Strainer Breakdown & Parts List

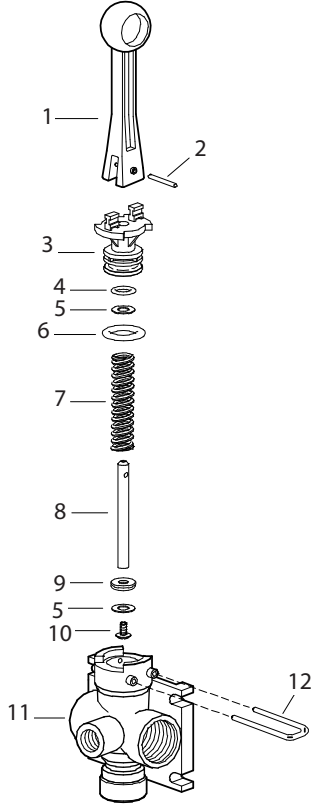


Ref #	Qty.	Part Number	Description
1	1	33510038	Poly cap
2	1	38000025	Stainless screen, 50 mesh
3	1	1700-0091	EPDM rubber gasket
4	1	33510039	Poly bowl

# Breakdowns & Parts Lists

## AA6B

### Manual Control Valve Breakdown & Parts List

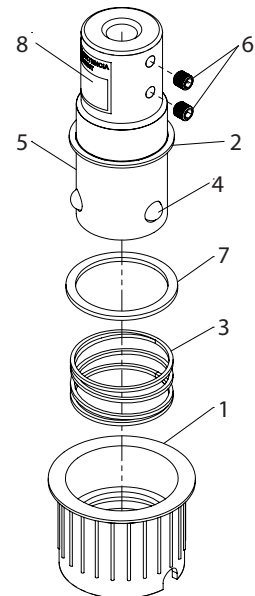


Ref #	Qty.	Part Number	Description
1	1	CP36301-NY	Nylon handle
2	1	CP36308-SS	Stainless groove pin
3	1	N/A	Polypropylene body insert
4	1	*	Viton O-ring
5	2	N/A	Polypropylene washer
6	1	*	Viton O-ring
7	1	N/A	Stainless spring
8	1	N/A	Stainless stem
9	1	*	Viton shut-off washer
10	1	*	Stainless phillips head screw
11	1	CP36303-PP	Polypropylene body
12	1	CP36309-302SS	Stainless retaining clip
N/A	1	* PK-AB6B-KIT	Spare parts kit (includes ref. #'s 4, 6, 9)

## 13230074

### PTO Coupler Breakdown & Parts List

Ref #	Qty.	Part Number	Description
1	1	N/A	Poly sleeve, quick coupler
2	1	N/A	Snap ring
3	1	N/A	Compression spring
4	3	3250-0030	Locking ball
5	1	N/A	Coupler
6	1	N/A	Adapter kit
7	1	N/A	Washer
8	1	N/A	Warning decal



# CropCare<sup>®</sup> Limited Warranty

3 Point Sprayer: Models ATX60-3PT-P

## Warranty Coverage

CropCare<sup>®</sup> hereby provides a Limited Two (2) Year Warranty on this product, manufactured by CropCare<sup>®</sup>. This product manufactured by CropCare<sup>®</sup> is warranted against any manufacturer's defects and any of this product's components in the 24 months following the original date of purchase.

Defective components will be repaired or replaced at the discretion of the manufacturer. It is the responsibility of the purchaser to return warranted components to the manufacturer. This warranty is limited to the repair or replacement of this product's components only. CropCare<sup>®</sup> is not to be held liable for incidental or consequential damages of any kind. This warranty covers the purchaser of this product and any other owners who own it during the two (2) year warranty period.

To retain the warranty, the product must be operated and maintained as described by its owner's manual. For warranty service, please have a copy of the purchase invoice available.

## Warranty Is Void if:

1. This product has been subjected to, in the opinion of CropCare<sup>®</sup>, negligent handling, misuse, an accident or if the instructions in the owner's manual were not completely followed.
2. This product's components have been altered in any manner or repairs have taken place with unapproved parts.

## Getting Service

All product warranty claims must be made through the original retailer. All warranty claims must be submitted with an invoice or a proof of purchase that denotes the purchase date and place of purchase. If you have any questions or comments concerning this warranty, please contact the original retailer.

## Ordering Parts

Please contact the original retailer to order replacement parts for your product.



# ***CROPCARE***

Manufactured by PBZ LLC  
A Paul B Zimmerman Inc. Company  
[www.CropCareEquipment.com](http://www.CropCareEquipment.com)